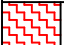
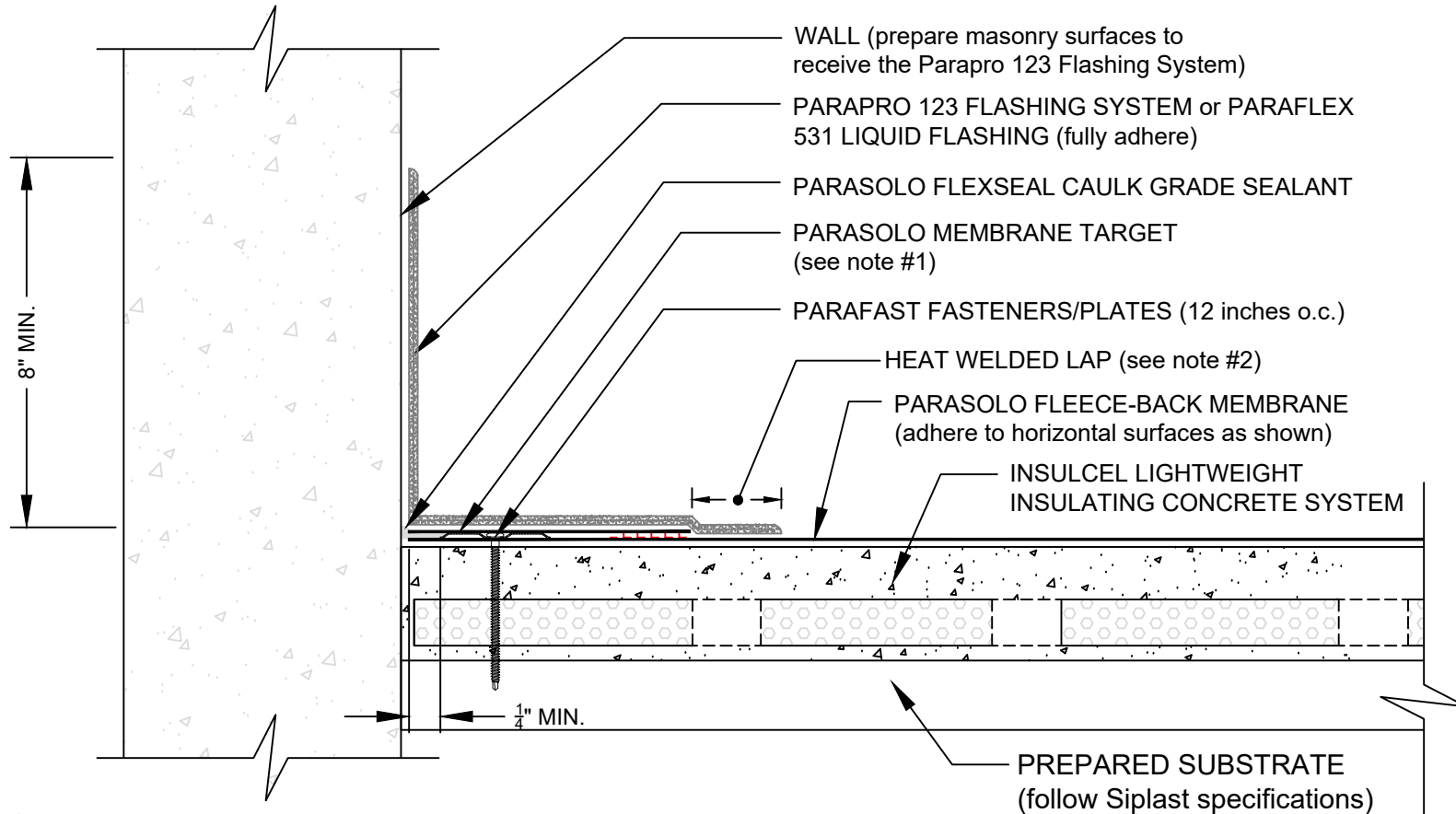


# WALL WITH SELF TERMINATING PARAPRO/PARAFLEX 531 LIQUID FLASHING

PARASOLO FLEECE BACK MEMBRANE INSULCEL  
LIGHTWEIGHT INSULATING CONCRETE

LEGEND	
	HEAT WELD

**Note: This detail applies to PVC,  
and PVC KEE systems only**



**NOTES:**

1. PARASOLO KEE MEMBRANE IS REQUIRED AT LOCATIONS TO RECEIVE PARAFLEX 531 LIQUID FLASHING SYSTEMS.
2. FOR HEAT-WELDING LAPS USE 1" MINIMUM WELD TO 1-1/2" MAXIMUM WELD.
3. REFER TO SIPLAST PREPARATION GUIDELINES FOR PROPER SURFACE TREATMENT OF ALL MATERIALS PRIOR TO APPLICATION OF PARAPRO OR PARAFLEX 531 LIQUID FLASHING MATERIALS.
4. REQUIREMENTS AND RECOMMENDATIONS DETAILED IN CURRENT SIPLAST SPECIFICATIONS SHALL APPLY IN ADDITION TO THE ABOVE DRAWING.

Scale: NTS

REF: WALL SELF-TERMINATING - PARASOLO - INSULCEL

Detail Number:  
DE-6844



14911 Quorum Drive, Suite 600 - Dallas, Texas - 75254 (800) 922-8800

[www.siplast.com](http://www.siplast.com)

Rev: 06.15.2023